

*The Hobbit's Guide to Testing Tools -
Small Steps to a Powerful Choice*





Kat, Bug Hunter



The Ivory Tower of Middle Managment.





The Powers



Please help us!
The realm is overrun with bugs,
and we need you to squash them.





The Dwarves



The Elfs



The Powers



The Party



The Knights



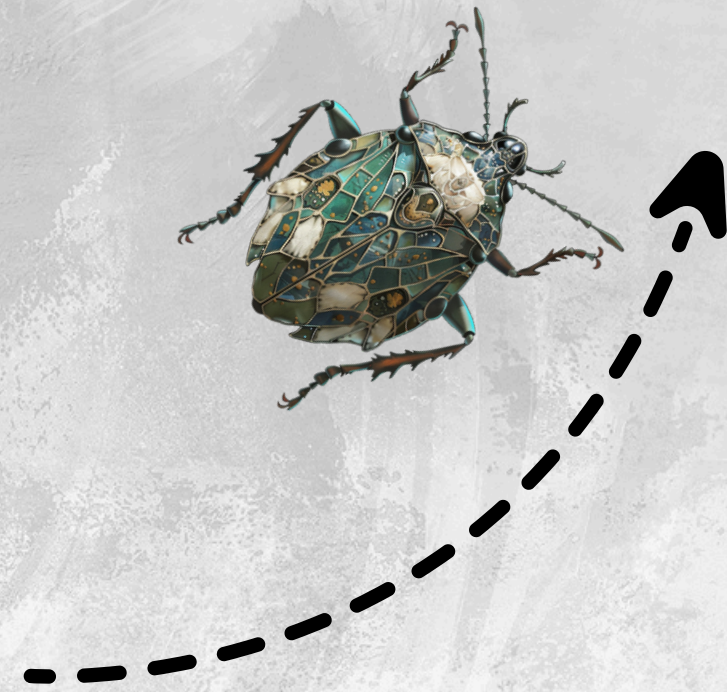
*Contact the elves to buy
bug squashing magic.*



*Contact the elves to buy
bug squashing magic.*



*Involve the dwarves to build
a bug squashing machine.*





The Knights

Fact finding





1. Time pressure
2. Cut corners
3. Nobody feels responsible
4. Magic solution desired
5. Customers are upset



Requirements

- Integration with current workflows
- Works fast (no waiting around for results)
- Low effort for the Knights
- Easy reporting
- Live alerts





The Party

Assemble your party



- Skill levels vary
- Have no experience in automagic
- Feeling generally overwhelmed
- Resist change (except one, who's junior and gung-ho)
- Fearful magic will take their jobs



Long term considerations

- Adoption by the different teams
- Team dynamics
- Hired experts
- Training
- Existing workload
- Cost





The Dwarves



The Case for Building

- Custom made
 - pro: exactly what you need
 - con: can be difficult to change later
- Known (and controllable) architecture
- Your tech stack
- Flexible
- Team skills
- Maintenance





The Elves



The Case for Buying

- Implementation speed
- Proven use cases
- Pricing
 - one off payments vs. ongoing payments
- Vendor roadmap vs. your needs
- Feature control





Everybody

Pros and cons



- Flexibility
- Training
- Long term investment
- Tailor made



- Speed
- Levelling up
- Short term cost
- Proven solution



The extended party

- The Powers That Be: low cost, quick benefits
- The Knights: speed (when used), ease of integrating
- The inner party: skills, speed, maintenance, future use
- Kat: aaarrrrggggghhhhh





The all want different things!
But I have an idea ...



The Hybrid Model

- Leverage existing solutions.
- Customising components to fit your specific needs.
- Less effort than building entirely from scratch.
- More flexibility than off-the-shelf.
- Lower cost than ready made solution.
- Best of both worlds?



Take aways

- Understand the problem
- Understandt the requirements
- Understand your resources
- Understand the available skills
- Understand the people who will be using the tool
- Involve all parties in the decision making process
- Look for compromise





Thank you!